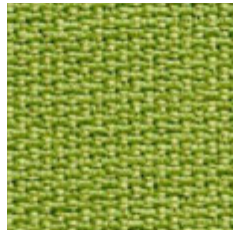
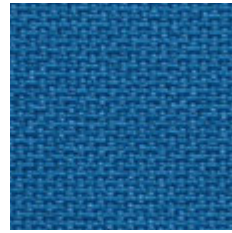




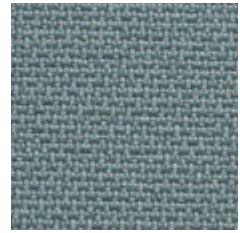
G 0095



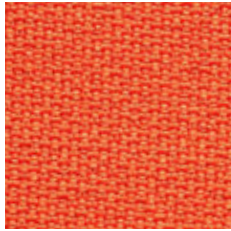
G 0069



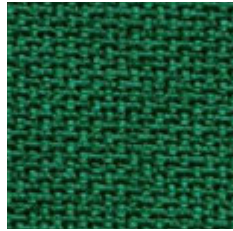
G 0081



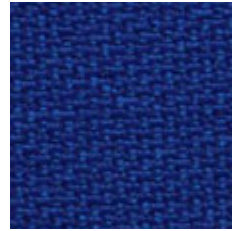
G 0082



G 0044



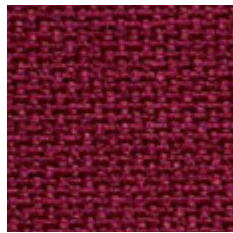
G 0070



G 0682



G 0083



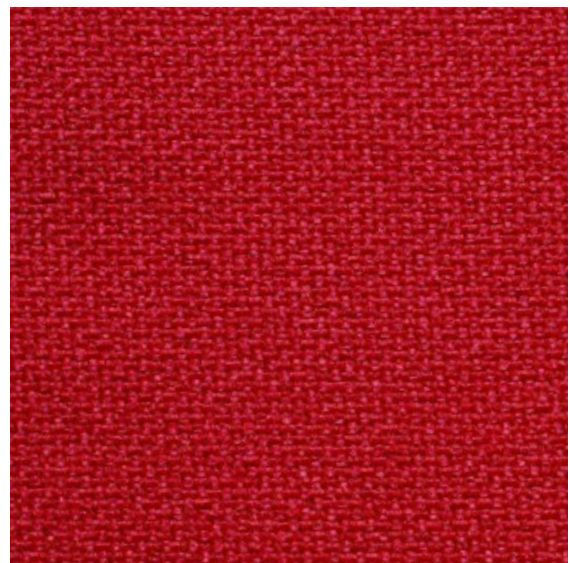
G 0102



G 0683



G 0099



G 0003

- D**
- 100% Polyester
  - Gewicht 365 g/m<sup>2</sup>
  - Scheuerfestigkeit 130 000 Zyklen Martindale
  - Fusselbildung 4-5 (EN ISO 12947-2)
  - Lichtechtheit >5 (EN ISO 105-B02)
  - Attest über schwere Entflammbarkeit BS EN 1021-1 BS EN 1021-2 BS 5852 part 1 (0,1) Q1 UK UNI 9175 Class 1 JEMME

- GB**
- polyester 100%
  - weight 365 g/m<sup>2</sup>
  - abrasion 130 000 cycles Martindale
  - resistance to pilling 4-5 (EN ISO 12947-2)
  - light fastness >5 (EN ISO 105-B02)
  - non-flammability certificate BS EN 1021-1 BS EN 1021-2 BS 5852 part 1 (0,1) Q1 UK UNI 9175 Class 1 JEMME

- PL**
- poliester 100%
  - waga 365 g/m<sup>2</sup>
  - odporność na ścieranie 130 000 cykli Martindale
  - odporność na pilling 4-5 (EN ISO 12947-2)
  - odporność na światło >5 (EN ISO 105-B02)
  - atest trudnozapalności BS EN 1021-1 BS EN 1021-2 BS 5852 part 1 (0,1) Q1 UK UNI 9175 Class 1 JEMME