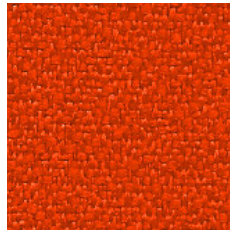
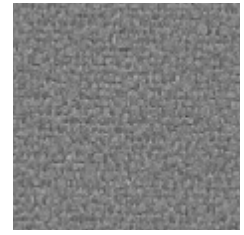


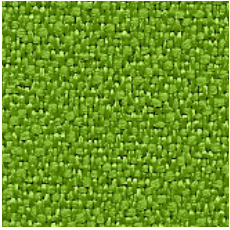
BD 005



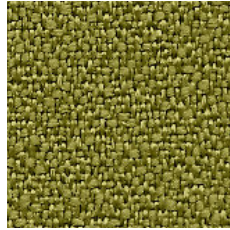
BD 012



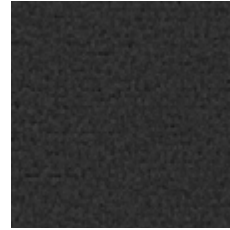
BD 078



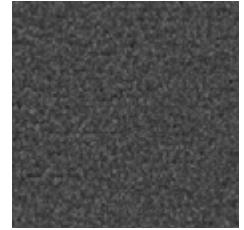
BD 048



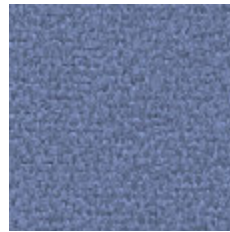
BD 021



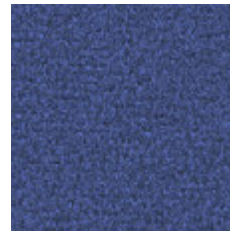
BD 033



BD 023



BD 003



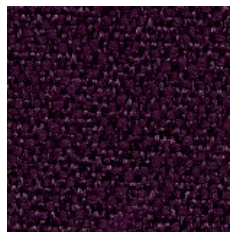
BD 071



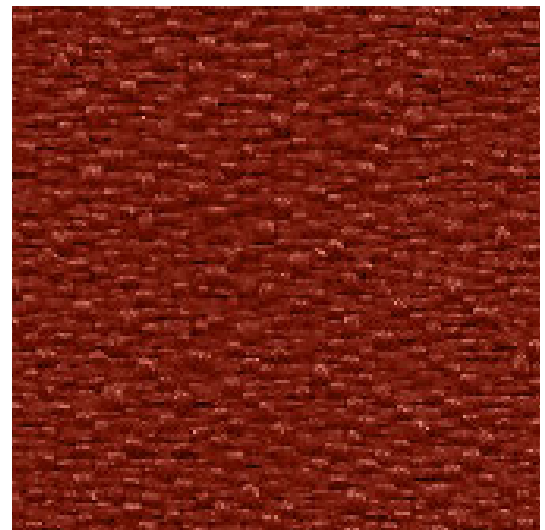
BD 006



BD 011



BD 004



BD 013



BD 008



BD 036

- D** – 100% Polyester
- Gewicht 250 g/m² +/- 5%
- Scheuerfestigkeit 100 000 +/- 10% Zyklen Martindale (EN ISO 12947-2)
- Fusselbildung 5 (EN ISO 12945-2)
- Lichtechtheit 6 (EN ISO 105-B02)
- Attest über schwere Entflammbarkeit (BS EN 1021-1) (BS EN 1021-2)
- CRIB 5
- BS 7176 Medium Hazard
- 1JM (UNI 9175)

- GB** – 100% polyester
- weight 250 g/m² +/- 5%
- abrasion 100 000 +/- 10% cycles Martindale (EN ISO 12947-2)
- resistance to pilling 5 (EN ISO 12945-2)
- light fastness 6 (EN ISO 105-B02)
- non-flammability certificate (BS EN 1021-1) (BS EN 1021-2)
- CRIB 5
- BS 7176 Medium Hazard
- 1JM (UNI 9175)

- PL** – poliester 100%
- waga 250 g/m² +/- 5%
- odporność na ścieranie 100 000 +/- 10% cykli Martindale (EN ISO 12947-2)
- odporność na pilling 5 (EN ISO 12945-2)
- odporność na światło 6 (EN ISO 105-B02)
- atest trudnozapałności (BS EN 1021-1) (BS EN 1021-2)
- CRIB 5
- BS 7176 Medium Hazard
- 1JM (UNI 9175)