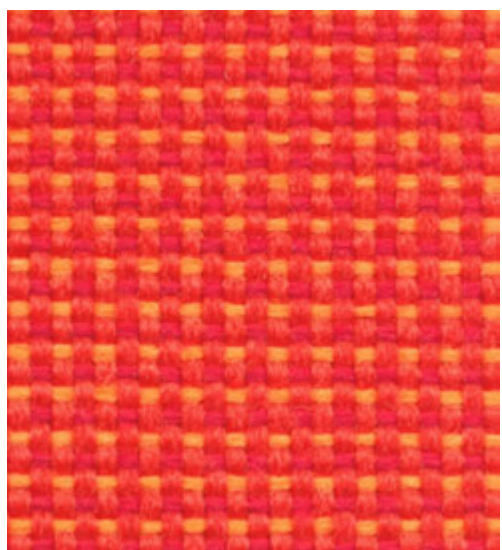
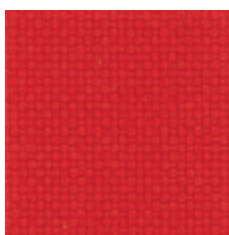


trevira CS

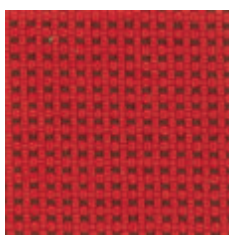
PASTEL 



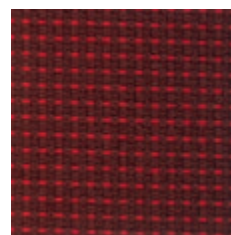
PA 515



PA 010



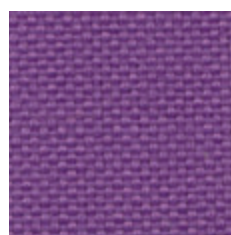
PA 510



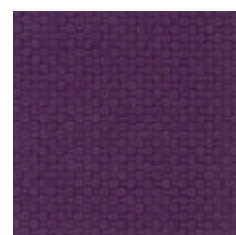
PA 511



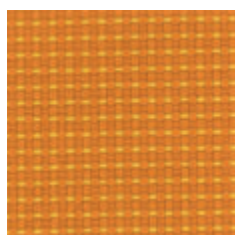
PA 015



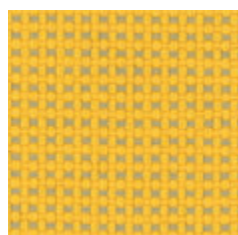
PA 025



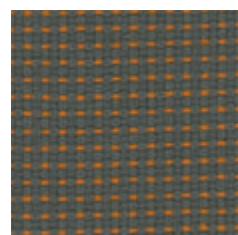
PA 020



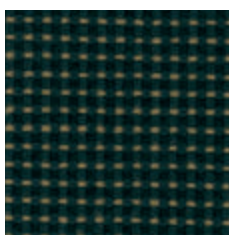
PA 516



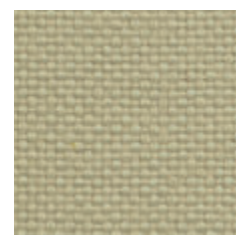
PA 517



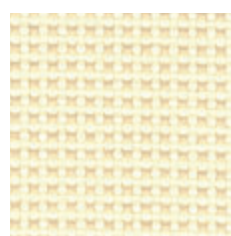
PA 531



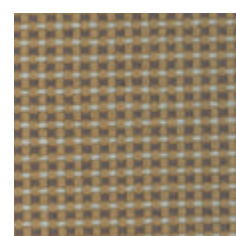
PA 533



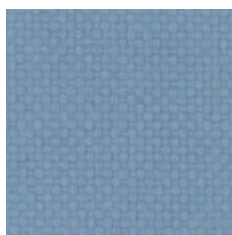
PA 030



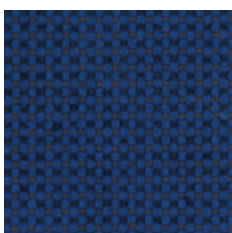
PA 534



PA 532



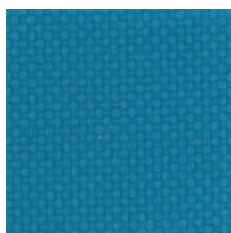
PA 045



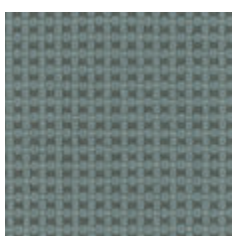
PA 541



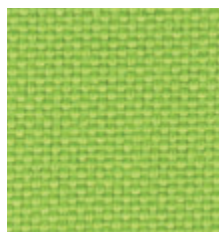
PA 040



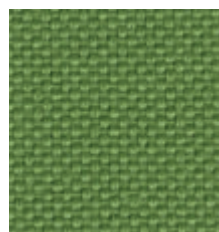
PA 050



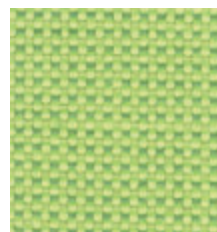
PA 555



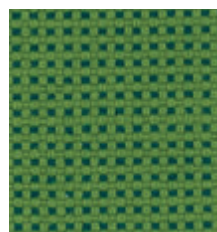
PA 060



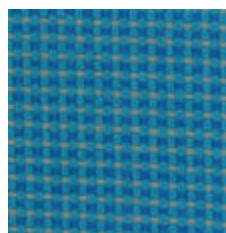
PA 065



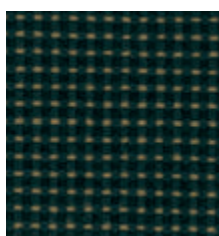
PA 560



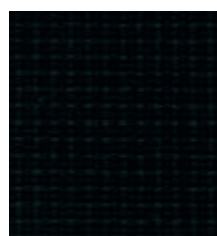
PA 565



PA 550



PA 571



PA 570

- D** – 100% Polyestere
- Trevira CS
- Gewicht 260 ± 5% g/m²
- Scheuerfestigkeit 80 000 ± 5%
Zyklen Martindale
(EN ISO 12947)
- Fusselbildung 5
(EN ISO 12945)
- Lichtechtheit 6
(EN ISO 105-B02)
- Attest über schwere
Entflammbarkeit
EN 1021-1
EN 1021-2
Crib 5
BS 7176 Medium Hazard
C1
M1
B1
IMO A 652(16)
IMO A 471 (XII)

- GB** – 100% Polyester
- Trevira CS
- weight 260 ± 5% g/m²
- abrasion 80 000 ± 5%
cycles Martindale
(EN ISO 12947)
- resistance 5
(EN ISO 12945)
- light fastness 6
(EN ISO 105-B02)
- non-flammability
certificate
EN 1021-1
EN 1021-2
Crib 5
BS 7176 Medium Hazard
C1
M1
B1
IMO A 652(16)
IMO A 471 (XII)

- PL** – poliester 100% – Trevira CS
- waga 260 ± 5% g/m²
- odporność na ścieranie
80 000 ± 5%
cykli Martindale
(EN ISO 12947)
- odporność na pilling 5
(EN ISO 12945)
- odporność na światło 6
(EN ISO 105-B02)
- atest trudnozapałności
EN 1021-1
EN 1021-2
Crib 5
BS 7176 Medium Hazard
C1
M1
B1
IMO A 652(16)
IMO A 471 (XII)